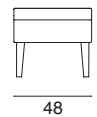
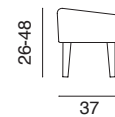
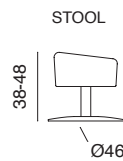
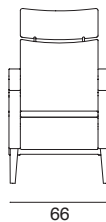
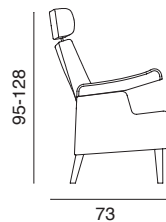




ACTIVECHAIR

Design Tapio Anttila



ARMI ACTIVECHAIR

An armchair which combines excellent seating comfort, ergonomics, and is functional for medicinal purposes.

Materials:

Mechanism: steel
Frame: plywood / solid wood (oak)
Padding: foam
Upholstery: as per choice (see the recommendation)
Wooden legs or a flange base are available
Standard colours are oak and walnut – please ask for the availability of other colour options

Legs:

Colours for wooden parts:

Seat height:

37–55 cm (can be chosen according to the user's height)

Chair height:

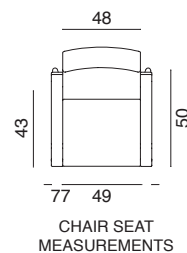
95–128 cm (depending on the adjustment of the legs and neck-rest)

Product weight:

40 kg

Accessories:

Stool with wooden legs or a flange base Removable covers



CHAIR SEAT MEASUREMENTS

SEAT HEIGHT (CM)
/ USER'S HEIGHT (CM)

41/	~150-160
43/	~155-165
45/	~165-170
47/	~170-175
49/	~175-180
51/	~180-185
53/	~182-187
55/	~185 -





ACTIVECHAIR

Design Tapio Anttila



ARMI ACTIVECHAIR

OPERATION: The chair's strong steel mechanism makes it durable and safe to use. The mechanism guides the user to a natural standing position without external force. This enables the use of leg muscles and/or arms when standing up from the chair. Standing up from the chair feels easier, also stress to the joints and the lower back are reduced.

Minimum weight for the chair is 30 kg.

CLASSIFICATION: Armi is a medical device that bears a CE mark certification. The chair is a class 1 (CE) medical device according to EU Council Directive 93/42/EEC (MDD), and a risk analysis according to the standard SFS-EN ISO 14971 has been performed. The materials and the structures comply to both Finnish and EU requirements.

ISO 9999 codes for assistive products 18 09 09 and 18 09 15

VALVIRA: A registered medical device within the product register of devices, from the 8th December 2016

UPHOLSTERY: The recommended upholstery for nursing and public facilities is Pintail's Healthcare Ancona. For more details see: <http://pintail.nl/en/product/ancona/>
Martindale > 100,000, washable, waterproof, fireproof, bacterial resistance

When selecting other fabric, please consider factors such as the fabric's usage and maintenance properties

